

Swarnnim Startup & Innovation University

Infrastructure Maintenance Policy
(Clean and Green Campus)



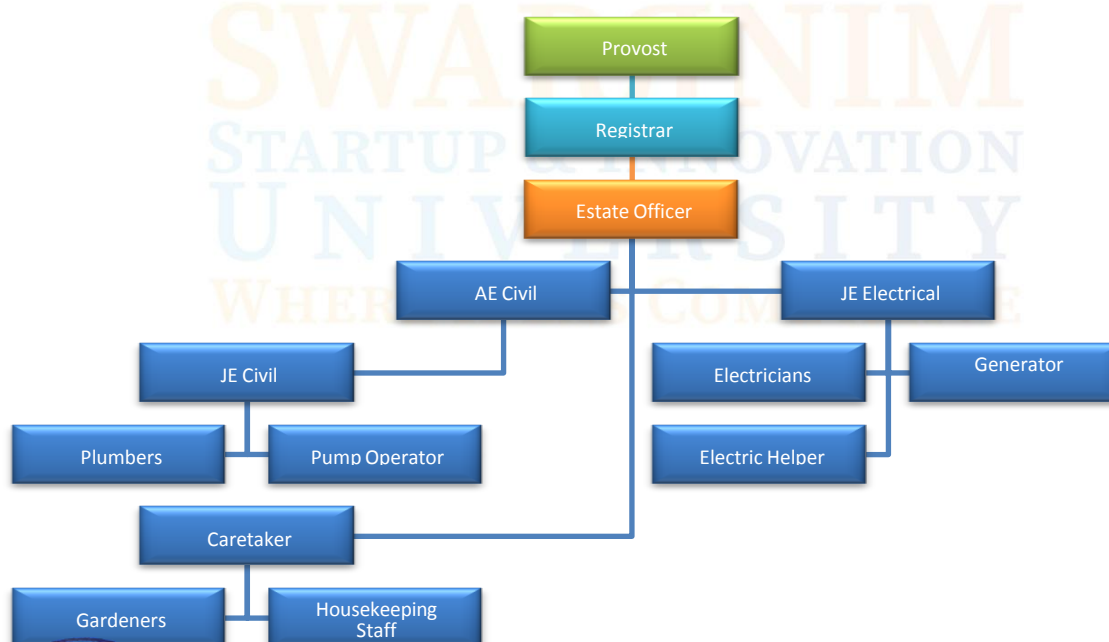
Managed by G P Jain Charitable Trust

**University Campus : Bhoyan Rathod, Opposite IFFCO, Near ONGC WSS, Adalaj Kalol Highway,
Gandhinagar, Gujarat - 382422.**

+91 95123 43333 | info@swarnnim.edu.in | www.swarnnim.edu.in

Preamble

- The Swarnnim Startup & Innovation University, Gandhinagar has an extensive infrastructure to deliver its teaching, learning and research programs. The Institute has an established system and procedures for maintenance and utilization of infrastructure in the campus. The University has regular maintenance and periodic replenishment of essential facilities. The University has an effective mechanism for the upkeep of the infrastructure and other facilities as to have optimum utilization of the facilities in order to have effective college functioning.
- The Estate office of the University is responsible for regular maintenance of all the infrastructural facilities, providing plans for campus development and other allied and incidental activities. It has civil and electrical wings and it operates under the supervision of Estate Officer who is nominated by the Provost.



Managed by G P Jain Charitable Trust

**Campus : Bhoyan Rathod, Opposite IFFCO, Near ONGC WSS, Adalaj Kalpesh Highway,
Gandhinagar, Gujarat - 382422.**

+91 95123 43333 | info@swarnnim.edu.in | www.swarnnim.edu.in

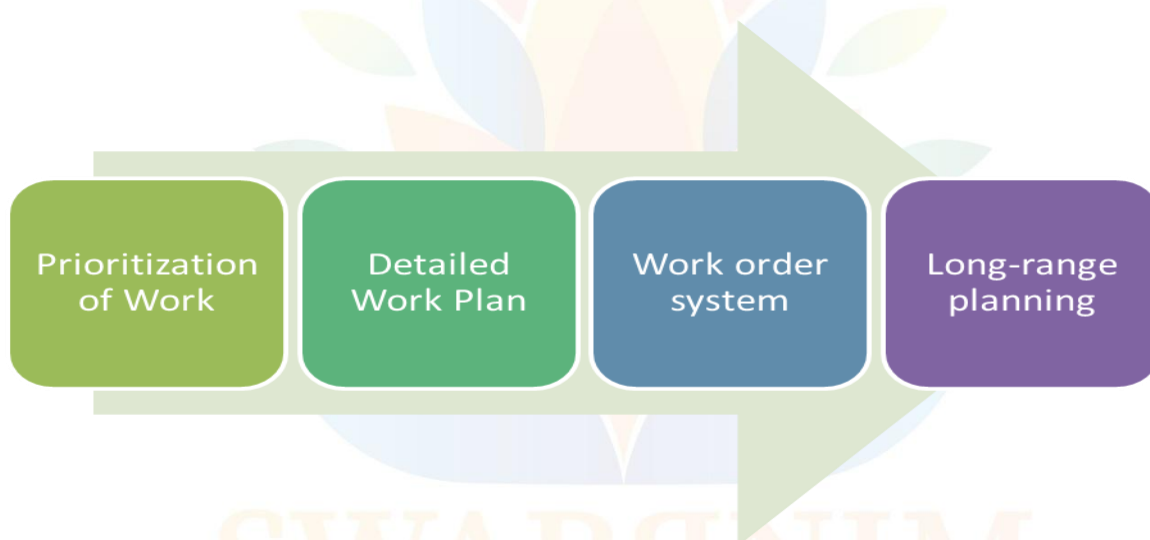
**Ragin
Ravindrab
hai Shah**

Digitally signed by Ragin Ravindrabhai
Shah
DN: cn=Ragin Ravindrabhai, title=4305,
pseudoym=02ae99b114542e3bb44
d33e0d1f1c0e,
2.5.4.20=f204874d45a02b76d89e3bee
f6355e95408942de49537158ee40
f7951483, postalCode=380013,
st=Gujarat,
serialNumber=0260a7b7730ae02de
a770105477163581701532ca365467
a776684465, cn=Ragin Ravindrabhai
Shah
Date: 2024.10.10 10:45:46 +05'30'

Scope

- This document provides a framework and an outline on the allocation of responsibilities to ensure effective use and maintenance of existing infrastructure facilities.
- Diagrammatic representations of a procedure for the maintenance of various infrastructural facilities are presented in this document.

Maintenance Flowchart



- By developing a maintenance policy that has these components in place, the department will have the tools it needs to control the performance of maintenance work at the University.
- The Estate office sets priorities of the works which are to be completed and implemented in the University. This priority system ensures that the most important maintenance work is done at a time it can be performed most cost-effectively.



Managed by G P Jain Charitable Trust

University Campus : Bhoyan Rathod, Opposite IFFCO, Near ONGC WSS, Adalaj Kalol Highway,
Gandhinagar, Gujarat - 382422.

+91 95123 43333 | info@swarnnim.edu.in | www.swarnnim.edu.in

Ragin
Ravindrab
hai Shah

Digitally signed by Ragin Ravindrabhai Shah
DN: cn=Ragin Ravindrabhai Shah, o=SWARNIM, email=ragin@swarnnim.edu.in, c=IN
Date: 2024.10.10 10:45:46 +05:30

Work Order Systems

- The Estate Office shall has a comprehensive work order system that includes all work request information, viz. source of work, description of work, priority, cost and days to complete. This information is required for the University to plan for the delivery of maintenance services as well as evaluate performance.

Long Range Planning

- The building committee meets in regular intervals to decide future goals for university infrastructure maintenance and new construction on the basis of requested from different departments and future requirements. The development of work plan helps University to anticipate its staff, equipment and material needs. This also helps in determining need for contracting particular services.



Managed by G P Jain Charitable Trust

University Campus : Bhoyan Rathod, Opposite IFFCO, Near ONGC WSS, Adalaj Kalol Highway,
Gandhinagar, Gujarat - 382422.

+91 95123 43333 | info@swarnnim.edu.in | www.swarnnim.edu.in

Ragin
Ravindrab
hai Shah

Digitally signed by Ragin Ravindrabhai Shah
DN: cn=Ragin Ravindrabhai Shah, o=Personal, title=4305,
serialNumber=02aef9fb114542e3b44
d53ee0d11c0e,
c=SA, 2.5.4.20=70487445a03b76699e3bee
2f6355e9f5408942de4f9537c58eeb40
4f951483, postalCode=380015,
st=Gujarat,
serialNumber=0260a2677309ae82de
5aebe10f5c77163c4171352ca365cb67
407666b4465, cn=Ragin Ravindrabhai
Shah
Date: 2024.10.10 10:45:46 +05'30'

Maintenance of Physical Facilities

- The physical facilities in the campus of the university are maintained by the Estate Office comprising of competent civil and electrical engineers and care taker. The services of plumbers, electricians, pump operators, carpenters, etc. are available round the clock in the campus. The electrical wing of estate office comprising of Electrical engineer(s), electricians and Electric helpers is responsible for the maintenance of electrical supply lines, regular maintenance, uninterrupted power supply and maintenance of equipment like generator sets, general lighting, power distribution system, solar panels, Lifts of faculties and residences etc. Ensuring adequate fire-fighting arrangement in common areas such as Library, Auditorium, Committee Room, at major events organized on campus such as Convocation etc. and coordination with respective departments for any such response in emergency, is an important responsibility. Maintenance of water pumping systems, water supply to residences, faculties, hostels and different other areas, sewage and drainage are undertaken by support staff under the supervision of caretaker. The Estate Office caretaker and supervisor with a team of members, monitors the maintenance and cleanliness of the buildings, classrooms, labs, furniture, campus ground, sports facilities, staff lounge, students amenity areas, cafeteria and hostel buildings. Transport facilities and all vehicles of the University are also monitored and maintained by the Estate Office.



Managed by G P Jain Charitable Trust

University Campus : Bhoyan Rathod, Opposite IFFCO, Near ONGC WSS, Adalaj Kalol Highway, Gandhinagar, Gujarat - 382422.

+91 95123 43333 | info@swarnnim.edu.in | www.swarnnim.edu.in

Ragin
Ravindrab
hai Shah

Digitally signed by Ragin Ravindrabhai
Shah
DN: cn=Personal, title=4525,
pseudoym=02ae90b114542e5bb44
d53e0d1f1c0,
2.5.4.25=D548674d45a02b76d8993bee
a76315e995408942de4f9537e58eeb40
d7951483, postalCode=380015,
st=Gujarat,
serialNumber=0766a26277309ae82dc,
serialNumber=0766a26277309ae82dc,
4076664456, cn=Ragin Ravindrabhai
Shah
Date: 2024.10.10 10:45:46 +05'30'

Digitally signed by Ragin Ravindrabhai
Shah
DN: c=IN, o=Personal, title=4305,
psudonymy=02ae99b114542e5bb44
d53e0df1fce,
2.5.4.2=f2d4874d45a02b76d899e3bee
a7635a10f5c408942dc4953758eeb840
47951483, postalCode=380015,
st=Gujarat,
serialNumber=0f260a2fa77309ae62dc
5aebc10f5c71763ca1741552ca365cb67
407666b4466, cn=Ragin Ravindrabhai
Shah
Date: 2024.12.12 12:45:46 +05'30'

laboratories. Students shall optimally utilize all classrooms during the daylong working hours and shall be mentored to upkeep the furniture.

Maintenance of Canteen

- The management of canteens is carried out through an advisory committee. This committee includes the Registrar, secretaries of two teaching associations, secretaries of two non-teaching associations and student representatives. The committee is responsible for selecting the vendors; negotiate food rates with the vendor and the campus fraternity. The grievance on the quality and service of the canteen is taken up regularly by the canteen committee.

Maintenance of Campus Cleanliness

- Cleaning of the campus areas in both campuses including the academic and hostel campus buildings is performed daily in the morning before the regular classes begin with the help of the outsourced housekeeping team. Toilets are cleaned twice every day. The whole campus area is maintained under the supervision of caretaker by the housekeeping supervisors who will be reporting the completion of work to the Estate Officer and his office team.

Campus Development Activity

- The Estate Office prepares proposals for infrastructural development in the campus as instructed by the Provost for University funded projects or for seeking funding from UGC, State Government and other Government projects through Registrar.
- The Office also coordinates with nominated government executing



Managed by G P Jain Charitable Trust

University Campus : Bhoyan Rathod, Opposite IFFCO, Near ONGC WSS, Adalaj Kalol Highway,
Gandhinagar, Gujarat - 382422.

+91 95123 43333 | info@swarnnim.edu.in | www.swarnnim.edu.in

Ragin
Ravindrab
hai Shah

Digitally signed by Ragin Ravindrabhai
Shah
DN: cn=Bh. o=Personal, title=ASOS,
pseudoym=02ae99b114542e1bb44
d52ee0d11cc,
2.5.4.20=126487445a02b76d89e3bee
+6335e9f5408942de4f9337c58eeb40
47951483, postalCode=380013,
st=Gujarat,
serialNumber=0260a267730fae02de
5a6e108547163a41741332a365a6d7
407666b4465, cn=Ragin Ravindrabhai
Shah
Date: 2024.10.10 10:45:46 +05:30

agencies for successful execution of such funded projects and submission of utilization certification by the Finance Officer.

Allied and Incidental Maintenance

The Estate office does the following works:

- Prepare Estimates of maintenance, repair, renovation or new projects as per approved schedule of rates prescribed by the Public Works Department, seek administrative approvals, carry out due process of inviting quotation, tenders, Expressions of Interest etc. as applicable as per prescribed respective limits for quotations, tenders etc., assign work to successful bidder after ensuring prepared MOU to be signed by Finance Officer.
- Monitoring of approved works for timely completion and adherence of quality, verify and process bills for payment to Finance Officer after due entry in measurement books, stock register etc.
- Maintenance of records of all executed works and assist in provision of requisite information as needed to authorities.
- Installation of electrical meters in residential units, carry out readings for monthly consumption and ensure deduction of electrical charges from the salary bill of residential allottees through advice note to Finance officer.
- Ensure handing over the new added infrastructure facilities to the concerned In-charge of the office after verifying the lists of assets, fittings and fixtures etc.
- Ensure handing over the keys of the allotted residential quarters to the



Managed by G P Jain Charitable Trust

University Campus : Bhoyan Rathod, Opposite IFFCO, Near ONGC WSS, Adalaj Kalol Highway,
Gandhinagar, Gujarat - 382422.

+91 95123 43333 | info@swarnnim.edu.in | www.swarnnim.edu.in

Ragin
Ravindrab
hai Shah

Digitally signed by Ragin Ravindrabhai
Shah
DN: cn=BN, o=Personal, title=4505,
postalCode=022ae99b114542c1b44
43e0d1f1ce,
2.5.4.20=f2c4874445a02b76b89e3bee
a763a5e9f5408942de4953715deeb40
d7931483, postalCode=380015,
st=Gujarat,
serialNumber=0760a2a77399ae03d,
serialNumber=0760a2a77399ae03d,
402666b44d6, cn=Ragin Ravindrabhai
Shah
Date: 2024.10.10 10:45:46 +05'30'

concerned teacher/employee as per the allotment by the House Allotment Committee /Provost and also take the vacated quarter keys from outgoing occupant.

- Issues No-Dues Certification to teachers/employees after ensuring all rental dues, electrical charges are paid and all fittings and fixtures are intact.
- Assists in removal of condemned and discarded items of furniture, fixtures and furniture on the request of HOD or In-charge concerned to the scrap yard or store for disposal under the directions of Registrar.



Registrar



SWARNINIM
STARTUP & INNOVATION
UNIVERSITY
WHERE IDEAS COME ALIVE

Managed by G P Jain Charitable Trust

**University Campus : Bhoyan Rathod, Opposite IFFCO, Near ONGC WSS, Adalaj Kalod Highway,
Gandhinagar, Gujarat - 382422.**

+91 95123 43333 | info@swarnnim.edu.in | www.swarnnim.edu.in

**Ragin
Ravindraba
hai Shah**

Digitally signed by Ragin Ravindraba
Shah
DN: cn=B, ou=Personal, title=4505,
pseudoym=21aef9b0b174342c30b44
d3e0d1fccc,
2.5.4.20=f2d4874d45a02b76b89e3bee
v533c5e9f5400942da49537550eeb40
d7951483, postalCode=380015,
st=Gujarat,
serialNumber=0f260a2b27709ae62dc
Saebe10f5c47163c41741352ca363cb67
467666b44d6, cn=Ragin Ravindraba
Shah
Date: 2024.10.10 10:45:46 +05'30'