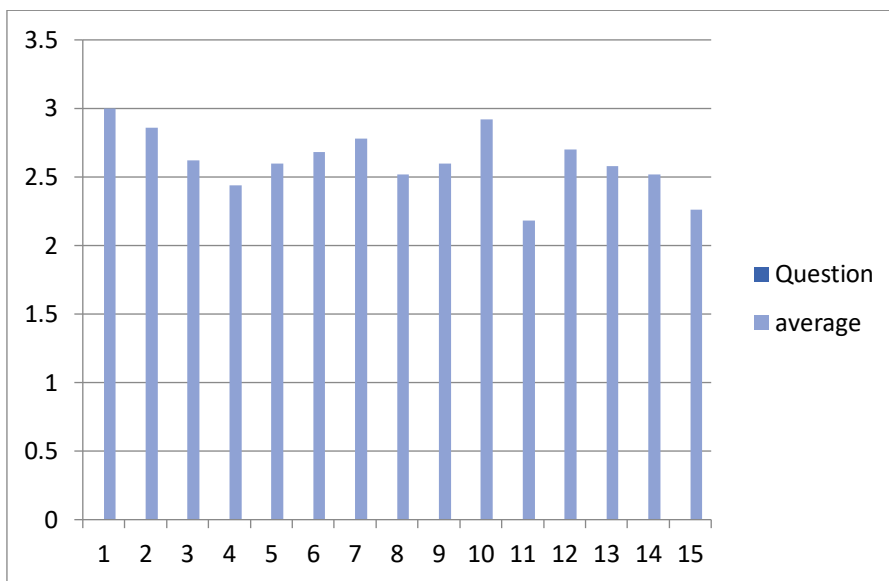


2023-2024



Q	1	2	3
1	0	0	50
2	0	7	43
3	0	19	31
4	1	26	23
5	1	18	31
6	2	12	36
7	3	5	42
8	1	22	27
9	1	18	31
10	0	4	46
11	2	37	11
12	0	15	35
13	0	21	29
14	0	24	26
15	0	37	13




## Observations Based on the Faculty Feedback Questionnaire responses

1. Faculty have taken sufficient steps to provide assistance to slow learners
2. Faculty agrees that Course content is followed by corresponding reference Books/ materials
3. Course content is followed by corresponding reference books/materials
4. Faculty improve internal modification based on assignment
5. Improve presentation ability and personality

## Suggestion received from Faculty Members

1. Faculty taken extra classes for slow learner
2. Faculty Required for Department
3. Communication training can be given to the students
4. Improve Communication Skills in our Students
5. Assignment for Seminar Work

## Suggested action:

1. Will organised in-service education
2. Will Preparation for national conference
3. Will arranged schedule role play for field education

