



SWARRNIM
STARTUP & INNOVATION
UNIVERSITY
WHERE IDEAS COME ALIVE
INDIA'S FIRST UNIVERSITY FOR STARTUP

Swarnnim Startup & Innovation University

Admission Policy





SWARAJINIM
STARTUP & INNOVATION
UNIVERSITY
WHERE IDEAS COME ALIVE.

ADMISSION POLICY

2025 – 26





SWARNIM
STARTUP & INNOVATION
UNIVERSITY
WHERE IDEAS COME ALIVE.

OBJECTIVE OF ADMISSION CELL

The objective of Admission Cell of SSIU is committed to follow the regulations and guidelines on admissions stipulated by the statutory bodies such as University Grants Commission (UGC). The Cell will provide necessary guidance to ensure that the interests, rights and needs prospective candidates who are looking for educational opportunities in various courses at SSIU are attended.





ADMISSION FLOW CHART FOR NATIONAL ADMISSION

SSIU releases admission notification on the website.

Link:

<https://www.swarnim.edu.in/admissions/Education/index.html>

Candidate learns about the eligibility criteria and process of application with help of counselors of admission cell and fills the online application form through CRM. Forms are also available in Admission Cell, SSIU Campus.

Candidate pays the requisite application fees and attaches the scan copy of all the required documents as per the notification and submit to admission cell crm/office.

Candidate receives the confirmation of application submission
On his/her E-Mail ID.

Student takes admission by paying the requisite fees and submitting original documents in university till last date of admission.

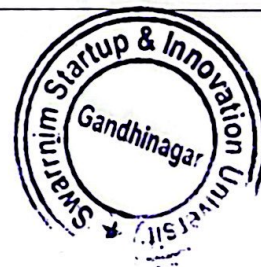
Required Documents at the time of admission:

For UG

1. Secondary Education Marksheet
2. Senior Secondary Education Marksheet
3. Leaving Certificate
4. Adhar Card
5. Migration Certificate
6. Photograph

For PG

1. Secondary Education Marksheet
2. Senior Secondary Education Marksheet
3. Graduation Transcripts
4. Aadhar Card
5. Migration Certificate
6. Photograph
7. Leaving Certificate





SWARNINIM
STARTUP & INNOVATION
UNIVERSITY
WHERE IDEAS COME ALIVE.

ADMISSION FLOW CHART FOR OVERSEAS ADMISSION

Fill the Application Form & Submit all the
Required Documents

Admission team will check the Eligibility and
will issue an Admission Offer Letter
(If eligible)*

Make the payment of Registration / One Time
University / Enrolment Fee and send the proof
of payment to admission@swarnnim.edu.in

A Provisional Admission Letter & Visa Letter will
be issued and will be sent via registered E-mail.

Required Documents at the time of admission:

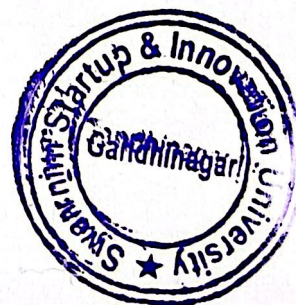
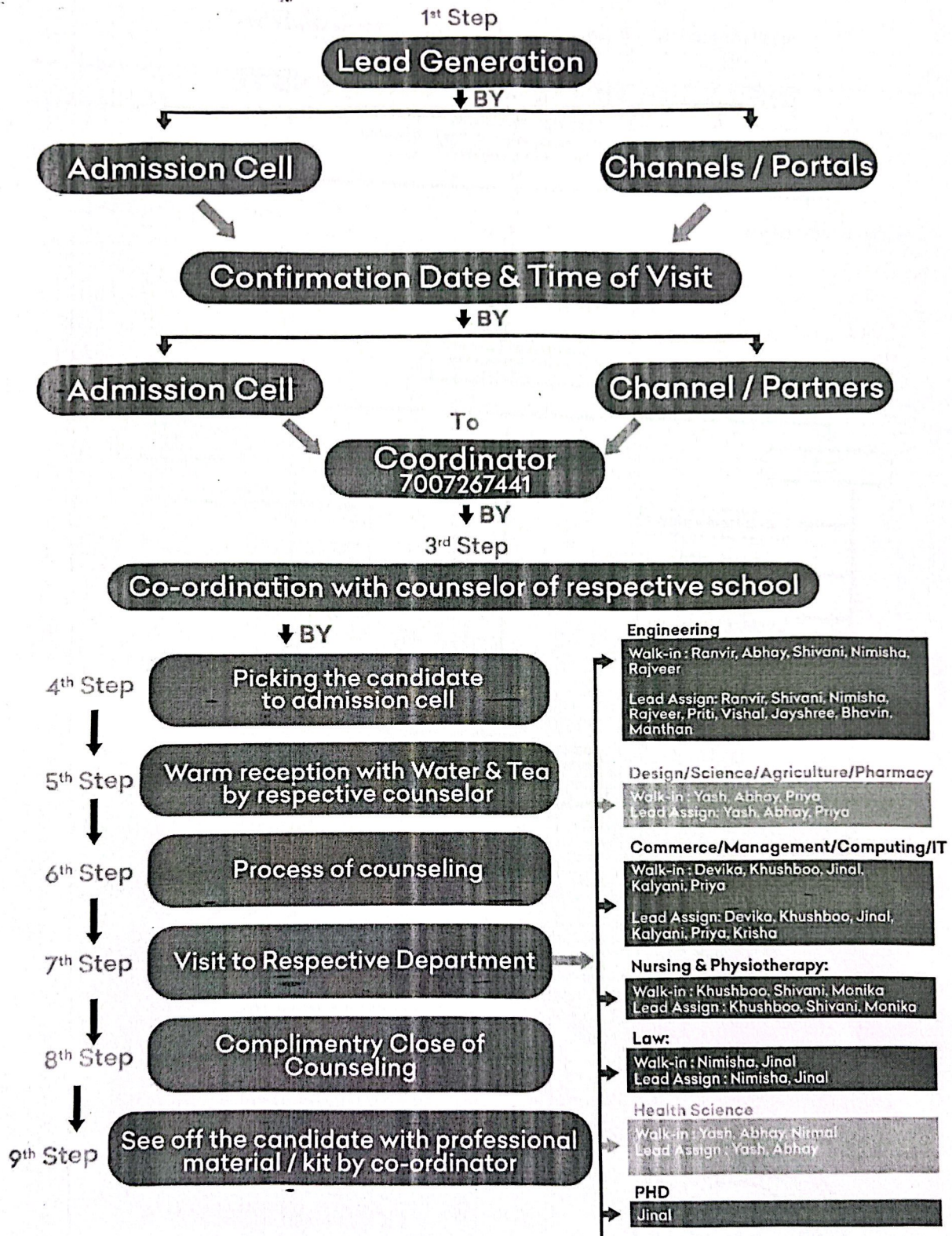
For UG	For PG
1. Secondary Education Marksheet	1. Secondary Education Marksheet
2. Senior Secondary Education Marksheet	2. Senior Secondary Education Marksheet
3. Leaving Certificate	3. Graduation Transcripts
4. Residential proof	4. Residential Proof
5. Visa and Passport	5. Visa and Passport
6. Provisional admission letter	6. Provisional admission letter
7. Medical Certificate	7. Medical Certificate
8. Photograph	8. Photograph
9. FRRO Registration copy	9. FRRO Registration copy
	10. Leaving Certificate





UNIVERSITY
WHERE IDEAS COME ALIVE.

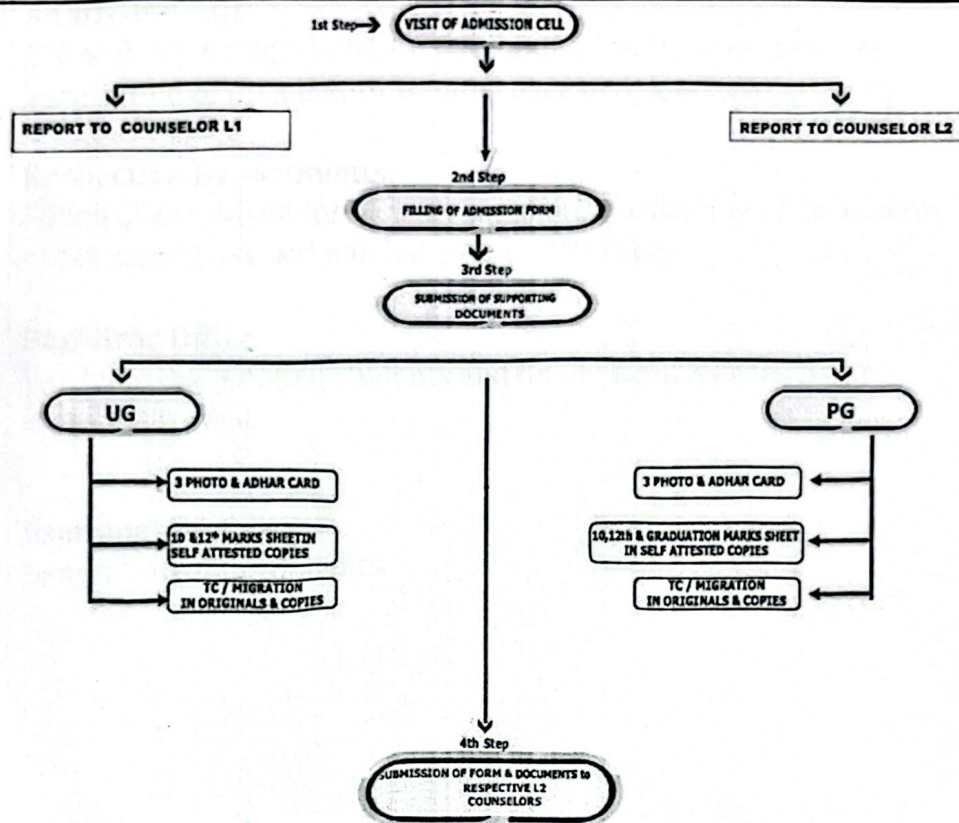
Pre Admission Process (9 Steps)





SWARNIM STARTUP & INNOVATION UNIVERSITY- ADMISSION FLOW CHART

4 STEPS (POST ADMISSION PROCESS)





SWARAJINIM
STARTUP & INNOVATION
UNIVERSITY
WHERE IDEAS COME ALIVE.

SOP FOR ENROLLMENT OF CANDIDATES

- **Admission cell.**
Counselling, doing admission formalities, Initial compilation & Verification of Documents. Handed over to respective departments.
- **Respective Departments.**
Filling of enrolment forms with complete verification of documents of the candidates and handed over to RO office.
- **Registrar Office.**
Verifying the enrolled students and finally handover the list to examination cell.
- **Examination Cell.**
Generation of Enrolments.





COURSES ELIGIBILITY AND SELECTION CRITERIA

SCHOOL	COURSE NAME	DEGREE	Eligibility	SEAT INTAKE	DURATION	Selection Procedure
SWARNIM SCHOOL OF ENGINEERING	Diploma in Electrical Engineering	Diploma	Passed 10th	30	3	On merit basis
	Diploma in Computer Engineering	Diploma		60	3	
	Diploma in Civil Engineering	Diploma		30	3	
	Diploma in Mechanical Engineering	Diploma		30	3	
	Diploma in Automobile Engineering	Diploma		30	3	
	B.Tech Electrical Engineering	UG	Passed 10 + 2 with Physics and Maths as compulsory Subject along with Chemistry/ Biotech/Bio/ Technical Vocational Subjects/ CS/ IT/ Agri with 45 % Marks	30	4	CUET/JEE Score card
	B.Tech Civil Engineering	UG		30	4	
	B.Tech Computer Engineering	UG		60	4	
	B.Tech Information Technology	UG		30	4	
	B.Tech Mechanical Engineering	UG		30	4	
	B.Tech Chemical Engineering	UG		30	4	
	B.Tech Environmental	UG		30	4	
	B.Tech cyber Security	UG		30	4	
	B.Tech Cloud Tech & Information Security	UG		30	4	
	B.Tech Artificial Intelligence	UG		30	4	
	M.Tech Structural Engineering	PG	Candidates must have passed their B.E/ B.Tech/ MCA/ M.sc Physics, Math, CS, IT with a minimum of 50 % marks	9	2	GATE/NET & PI
	M.Tech Environmental	PG		18	2	
	M.Tech Advance Manufacturing System	PG		6	2	
	M.Tech Artificial Intelligence	PG		6	2	
	M.Tech Computer Engineering (Cyber Security)	PG		6		





SWARNNIM
STARTUP & INNOVATION
UNIVERSITY
WHERE IDEAS COME ALIVE.

COURSES ELIGIBILITY AND SELECTION CRITERIA

SCHOOL	COURSE NAME	DEGREE	Eligibility	SEAT INTAKE	DURATION	Selection Procedure
SWARNNIM SCHOOL OF SCIENCE	B.Sc Mathematics	UG	10+2 Passed with Science	30	3	On Merit Basis
	B.Sc Chemistry	UG		60	3	
	B.Sc Biotechnology	UG		60	3	
	B.Sc Physics	UG		60	3	
	B.Sc Microbiology	UG		60	3	
	M.Sc Microbiology	PG	Passed Graduation in Science with 50%	60	2	Personal Interview
	M.Sc Biotechnology	PG		30	2	
	M.Sc Chemistry	PG		180	2	
	M.Sc Physics	PG		30	2	
	M.Sc Mathematics	PG		30	2	
	M.Sc Environment Science	PG		30	2	


Registrar

Swarnnim Startup & Innovation University
At : Boyan Rathod, Gandhinagar.

